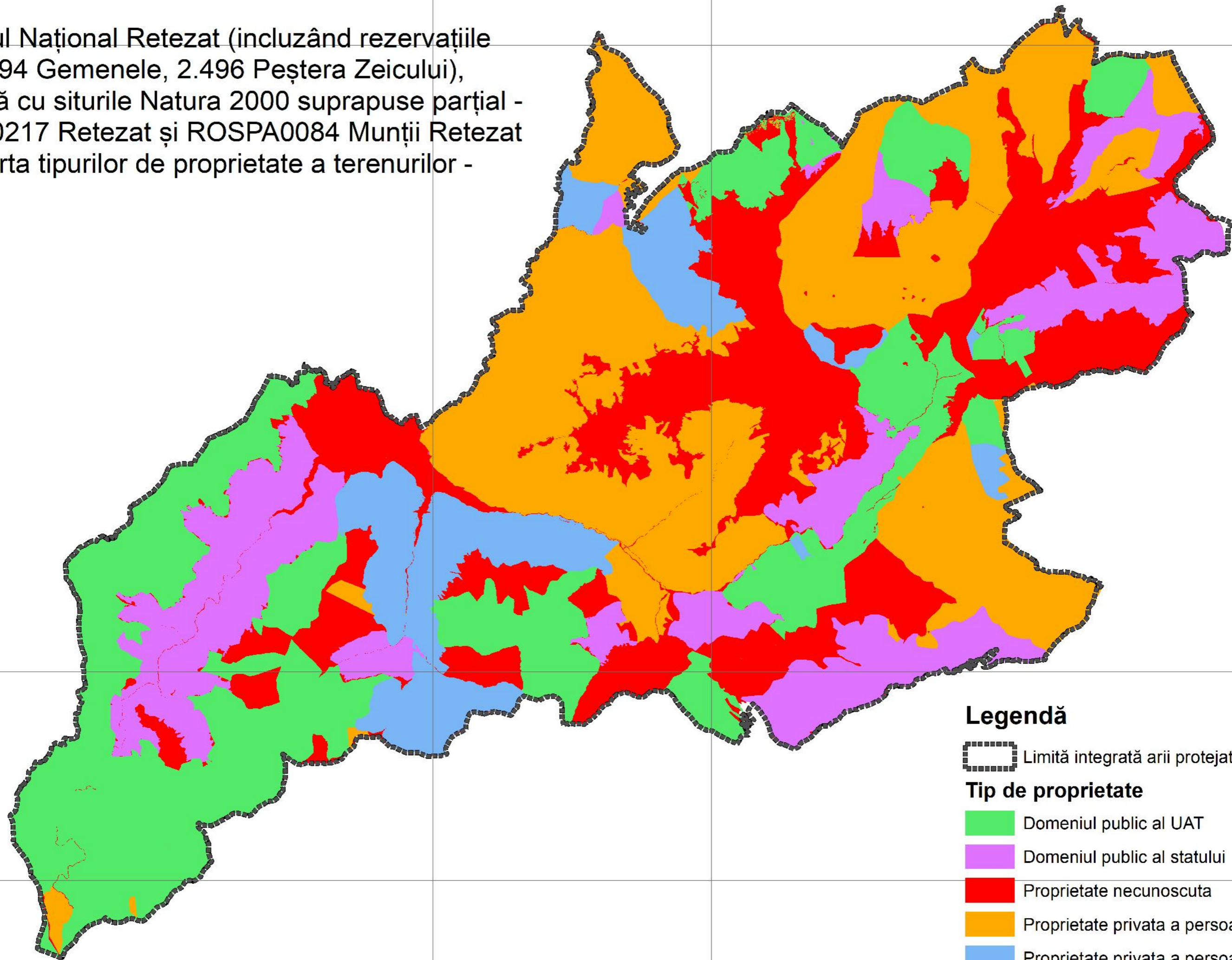











Parcul Național Retezat (incluzând rezervațiile  
2.494 Gemenele, 2.496 Peștera Zeicului),  
împreună cu siturile Natura 2000 suprapuse parțial -  
ROSCI0217 Retezat și ROSPA0084 Munții Retezat  
- harta tipurilor de proprietate a terenurilor -



### Legendă

 Limită integrată arii protejate

#### Tip de proprietate

-  Domeniul public al UAT
-  Domeniul public al statului
-  Proprietate necunoscuta
-  Proprietate privata a persoanelor fizice
-  Proprietate privata a persoanelor juridice
-  Utilizarea terenurilor

0 2 4 8 Km